

ORDINANCE NO. : 398

AN ORDINANCE AMENDING THE COMPREHENSIVE PLAN OF THE CITY OF PORT ST. JOE, FLORIDA BY AND THROUGH PROCEDURES REQUIRED FOR SMALL-SCALE MAP AMENDMENTS PURSUANT TO AUTHORITY UNDER STATE STATUTES SECTION 163.3187, SPECIFICALLY CHANGING A TRACT OF LAND CONTAINING APPROXIMATELY 11 ACRES AND BEING PARCEL #03019-001 AND A PORTION OF PARCEL #03019-000, AND BEING A PART OF SECTION 18, TOWNSHIP 8, SOUTH, RANGE 10 WEST, AND SECTION 13, TOWNSHIP 8 SOUTH, RANGE 11 WEST, GULF COUNTY, FLORIDA FROM AGRICULTURAL TO CONSERVATION AND VERY LOW DENSITY RESIDENTIAL, AMENDING THE CITY OF PORT ST. JOE FUTURE LAND USE MAP; PROVIDING FOR REPEAL OF ANY CONFLICTING ORDINANCES; PROVIDING FOR SEVERABILITY; AND PROVIDING AN EFFECTIVE DATE.

WHEREAS, §163.3187, Florida Statutes, provides for the authority and procedure for the City Commission of Port St. Joe, Florida to amend its Future Land Use Map utilizing procedures applicable to small scale developments; and

WHEREAS, On December 17, 2007, The property owners filed applications for an amendment to the City of Port St. Joe Future Land Use Map for a small scale development consisting of 11 acres, more or less; and

WHEREAS, in accordance with §163.3187(1)(f)(2) Florida Statutes and §166.041(3)(c) Florida Statutes, notice was duly provided to the public of a public hearing to be held on January 15, 2008, for the adoption of the amendment to the Future Land Use Map; then and

NOW THEREFORE BE IT ORDAINED BY THE BOARD OF CITY COMMISSIONERS OF THE CITY OF PORT ST. JOE, FLORIDA:

SECTION 1. APPROVAL

The application for the small scale amendment to the Future Land Use Map for the Property described in Exhibit "A", attached and incorporated herein (the "Property"), is hereby approved and the land use designation for the Property on the City of Port St. Joe Future Land Use Map is hereby changed from Agricultural to conservation and very low density residential (R-1) and conservation. The application and all documentation submitted by the Applicant in support of it are hereby incorporated by reference.

SECTION 2. CONSISTENCY WITH CITY OF PORT ST. JOE COMPREHENSIVE PLAN

The Board of City Commissioners hereby finds and determines that the approval of the application and change in land use as set forth in Section 1 is consistent with the goals, objectives and policies of the City of Port St. Joe Comprehensive Plan.

SECTION 3. ENFORCEMENT

The City may enforce this Ordinance as authorized by law.

SECTION 4. OTHER ORDINANCES

Except as specifically modified or changed in this Ordinance, all provisions of the Code shall apply in the same manner as throughout the City.

SECTION 5. FUTURE LAND USE MAP

Upon this Ordinance becoming effective, the City of Port St. Joe Future Land Use Map shall be amended to show the Property as having a land use of conservation and very low density residential (R-1). The City Clerk is hereby directed to revise the City of Port St. Joe Future Land Use Map to reflect this designation.

SECTION 6. SEVERABILITY

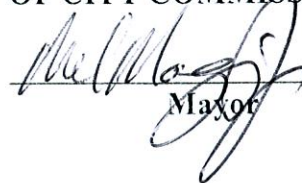
The provisions of this Ordinance are hereby declared to be severable. If any provision of this Ordinance, or the application thereof, to any person or circumstance is held to be invalid, such invalidity shall not affect other provisions or applications of this Ordinance that can be given effect without the invalid provision or application.

SECTION 7. EFFECTIVE DATE

This Ordinance shall become effective upon passage.

This Ordinance was adopted in open regular meeting after its second reading this 15th day of January, 2008.

**THE CITY OF PORT ST. JOE BOARD
OF CITY COMMISSIONERS**



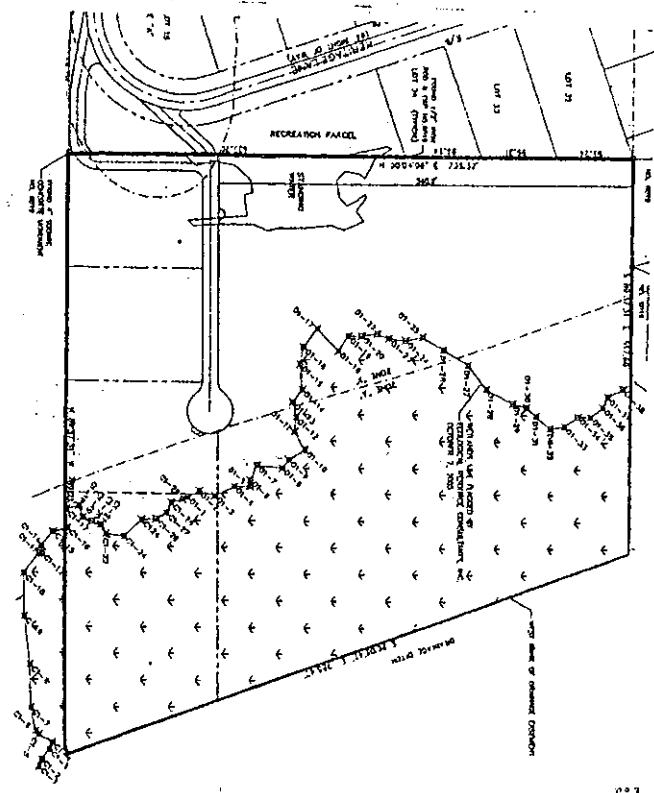
Mayor

Attest:



City Clerk

Exhibit "A"



1/1/1970
 1/1/1970
 1/1/1970
 1/1/1970
 1/1/1970

1/1/1970
 1/1/1970
 1/1/1970
 1/1/1970
 1/1/1970